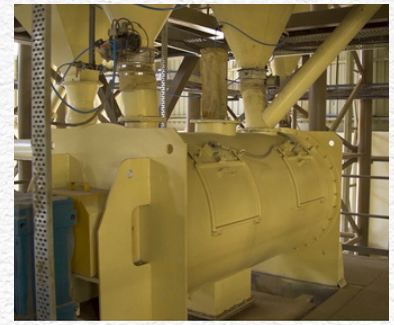




YANNI
PLAST

Better buildings
begin here.



Corporate Address:

206, Kamat Tower,
Patto Plaza, Panjim
North Goa - 403001

Manufacturing Unit:

S No. 54/16, Insuli,
Sawantwadi, Dist, Sindhudurg
Maharashtra - 416510

For any queries please contact :

+91 7798983277

sales@yanniinfraprojects.in
yanniinfraproject.com





Yanni Infra Projects Pvt Ltd's goal is to lead technological innovative and eco-friendly ready to use construction products

We aim to offer a premium and sustainable product range along with highest customer satisfaction.

Antonio Crispino Sequeira
Managing Director

YIPL is a pioneering company at the forefront of sustainable construction materials, specializing in the production of aggregates, M sand, and ready-mix plaster. What sets us apart is its innovative use of solar power to drive its manufacturing processes, ensuring minimal carbon footprint and reduced dependency on conventional energy sources.



M sand, or manufactured sand, is another cornerstone of our offerings. M sand is a viable alternative to traditional river sand, providing excellent workability, superior cohesion, and enhanced structural integrity in concrete and mortar mixtures. Our M sand is meticulously processed to meet precise specifications, making it an ideal choice for diverse construction needs.

The company's primary product line includes high-quality aggregates that serve as the foundation for various construction projects. These aggregates are carefully sourced, processed, and graded to meet stringent quality standards, ensuring optimal strength and durability in every application. Our aggregates are sought after by builders, contractors, and infrastructure developers for their consistent quality and reliability.



YANNI PLAST

Ready Mix Plaster RMP 111

Yanni Plast Ready Mix Plaster RMP 111 is a carefully proportioned blend of high quality raw materials including well graded fine sand and special performance powder additives

1. Excellent Workability & Superior Finish
2. Less Rebound Loss
3. Superior Quality
4. Saves Time
5. Less Wastage and Better Yield



USES & APPLICATIONS



External plastering
of walls

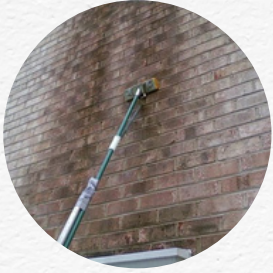


Internal plastering
of walls



Other general purpose
repair & patch work

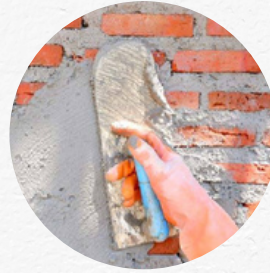
SURFACE PRERPARATION, MIXING & APPLICATIONS



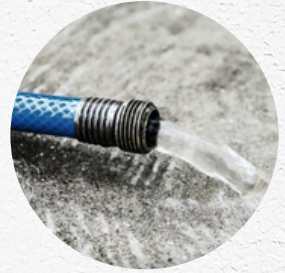
Surface should be cleaned properly by removing all loose particles, oil, grease etc. Surface needs to be pre-wetted with clean water and cement slurry to be sprayed uniformly.



Pour required quantity of Yanni Plast into water (14-18%) to get the desired consistency by using spiral mixer at low speed. Mix well to obtain a lump-free smooth paste.



Apply the stirred mixture on to the surface prepared for plastering & use this within pot life.



Post application curing should start in 18-24 hours of application and to be carried out for done for 3-4 days

TECHNICAL INFORMATION

- Mixed density: 1.90-2.1 Kg/ltr
- 28 Day comprehensive strength : 10-15Mpa
- Pot life: 30-50 minutes
- Bulk density: 1.6-1.8Kg/ltr
- Pull-out bond strength :- ≥ 0.5 Mpa
- Water-Powder ratio : 14-18%

COVERAGE

A 40kg bag of Yanni Plast Ready Mix Plaster RMP 111 covers " 15-20 sq.ft. at coverage of 10 - 12 mm thickness. Coverage depends upon quality and nature of substrate being used

PACKAGING, SHELF LIFE & STORAGE

- Available in 40kg bags
- 6 months from the date of manufacturing
- Store in a dry place away from moisture

YANNI PLAST

Self Cure Plaster RMP 222

Yanni Plast Self Cure Plaster RMP 222 is a ready to use cementitious mortar suitable for internal & external plaster application. Its unique formula consists of well graded sand, fiber reinforced & self curing additives

1. Self curing
2. Higher bond Strength
3. Less Rebound Loss
4. Saves Time / Cost
5. Easy to use and apply, Just add water
6. Dual Function Plastering and patch repair



USES & APPLICATIONS



External plastering
of walls

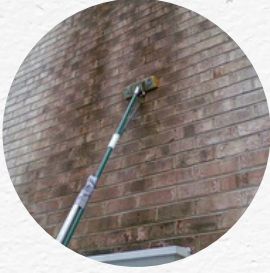


Internal plastering
of walls



Other general purpose
repair & patch work

SURFACE PREPARATION, MIXING & APPLICATIONS



Surface should be cleaned properly by removing all loose particles, oil, grease etc. Surface needs to be pre-wetted with clean water and cement slurry to be sprayed uniformly.



Pour required quantity of Yanni Plast Self Cure Plaster into water (15-17%) to get the desired consistency by using spiral mixer at low speed. Mix well to obtain a lump-free smooth paste.



Apply the stirred mixture on to the surface prepared for plastering & use this within pot life. No curing required.

TECHNICAL INFORMATION

- Mixed density: 1.90-2.10 Kg/ltr
- 28 Day comprehensive strength : 8-10Mpa
- Pot life: 30-50 minutes
- Bulk density: 1.6-1.80Kg/ltr
- Adhesive Strength, N/mm² : 0.40-0.60
- Water-Powder ratio : 15 -17%

COVERAGE

A 40kg bag of Yanni Plast Self Cure Plaster RMP 222 covers ~ 18-20 Sq ft coverage of 10-12 mm thickness. Coverage depends upon quality & nature of applied surface.

PACKAGING, SHELF LIFE & STORAGE

- Available in 40kg bags
- 6 months from the date of manufacturing
- Store in a dry place away from moisture

YANNI PLAST

Waterproof Plaster RMP 333

Yanni Plast Waterproof Plaster RMP 333 is a ready to use cementitious waterproof mortar suitable for Internal & External plaster application. The unique formula consist of ell graded sand & Special waterproofing & self curing additives

- Excellent water resistance capability
- Efflorescence resistance
- Higher bond Strength
- Less Rebound Loss
- Saves Time/Cost
- High coverage
- Easy to use and apply, just add water
- Dual function plaster & Patch repair



USES & APPLICATIONS



External plastering
of walls

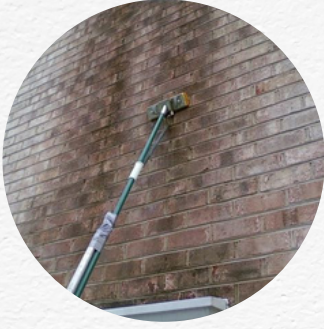


Internal plastering
of walls



Other general purpose
repair & patch work

SURFACE PRERPARATION, MIXING & APPLICATIONS



Surface should be cleaned properly by removing all loose particles, oil, grease etc. Surface needs to be pre-wetted with clean water and cement slurry to be sprayed uniformly.



Pour required quantity of Yanni Plast Waterproof Plaster into water (15-17%) to get the desired consistency by using spiral mixer at low speed. Mix well to obtain a lump-free smooth paste.



Apply the stirred mixture using trowel on to the surface prepared for plastering & use this within pot life. No curing required.

TECHNICAL INFORMATION

- Mixed density :-1.8-1.95 Kg/ltr
- 28 day compressive strength :-10-15Mpa
- Pot life :-50-60 minutes
- W/P :-14-16
- Bulk density :- 1.60-1.8Kg/ltr
- Pull-out bond strength :- ≥ 0.5 Mpa
- Capillary absorption coefficient
(Wc 2)= $\leq 0,20 \text{ kg}/(\text{m}^2 \cdot \text{min}^{0,5})$

Standard : EN 998-1;2017-02

COVERAGE

A 40Kg bag of Yanni Plast Waterproof Plaster RMP 333 gives ~10-12sq. ft coverage of 10-12 mm thickness

PACKAGING, SHELF LIFE & STORAGE

- Available in 40kg bags
- 6 months from the date of manufacturing
- Store in a dry place away from moisture

YANNI PLAST

Block Jointing Mortar

A strong effective product which contains fine graded M-Sand, high ratio of cement & adhesion enhancing polymers. Yanni Plast Block Jointing Mortar is the perfect solution for AAC, Concrete, Fly Ash & Hollow Blocks. Workability, adhesion & resistance to corrosive environment makes it a first choice of masonry contractors.

- Contains Bonding Enhancing Polymers
- Fine Particle Grading
- Advanced Water Retention Polymers



USES & APPLICATIONS



High Bonding Strength



Better Coverage



Self Curing

SURFACE PRERPARATION, MIXING & APPLICATIONS



TECHNICAL INFORMATION

- Setting Time(Initial) : ≥ 30 min
- Setting Time(Final) : ≥ 600 min
- Compressive Strength : >6 Mpa
- Flexural Strength : Min 1.8 Mpa

COVERAGE

A 40kg bag of Yanni Plast Block Jointing Mortar gives $\sim 12 \text{ M}^2$ - 14 M^2 , of block size $600 \times 200 \times 100 \text{ mm}$. The coverage area however will depend upon the quality and evenness of the surface, thickness of joints.

PACKAGING, SHELF LIFE & STORAGE

- Available in 40kg bags
- 6 months from the date of manufacturing
- Store in a dry place away from moisture

YANNI PLAST

Tile - On Floor Adhesive - TA 101

Yanni Plast TA 101 Tile On Floor Adhesive is a polymer modified, cementitious adhesive, that can be used in slurry form on semi-wet screed, for wet-on-wet fixing of tiles, as well as an adhesive paste for fixing tiles on floor and wall.

- Better bond than conventional cement slurry
- Very high pot life, ensures high speed of tiling
- Faster to apply, good spreading properties
- Suitable for fixing small & large tiles
- Zero Wastage



ADVANTAGES

- Free flowing slurry consistency
- Dual use can be used as slurry adhesive or as thin set tile adhesive
- Shrinkage resistance
- No settlement and High adjustable time

USAGE & APPLICATIONS



For Internal tiling
application on walls



For Internal tiling
application on floors



Tile repairs &
Rehabilitation works

SURFACE PRERPARATION, MIXING & APPLICATIONS



Surface should be cleaned properly by removing all loose particles, oil, grease etc. Surface needs to be pre-wetted with clean water.



Mix with 4.5 - 5 litres of water to get the desired consistency by using spiral mixer at low speed. Mix well to obtain a lump-free smooth paste.



Apply the stirred mixture using Notched trowel on to the surface

TECHNICAL INFORMATION

- Mixed density: 1.60-1.90 Kg/ltr
 - Pot life: 4-5hrs
 - Adjustable time: 30-40 minutes
 - W/P: 40-45 for Slurry application
 - Shear adhesion strength: 21.00N/mm², 28days
 - Bulk density: 1.40-1.60Kg/ltr
 - Open time: 30-40 minutes
 - W/P: 22-25 for Wall application
 - Tensile adhesive strength: 20.5N/mm², 28days
- Standards: IS 15477-2019 TYPE 1

COVERAGE

WALL APPLICATION:

A 20kg bag of Yanni Plast TA 101 Tile On Floor Adhesive gives ~55-60 sq. ft coverage of 3 mm thickness

FLOOR APPLICATION:

A 20kg bag of Yanni Plast TA 101 Tile On Floor Adhesive gives ~90-100 sq. ft coverage of 1-3 mm thickness

PACKAGING, SHELF LIFE & STORAGE

- Available in 20kg bags
- Store in a dry place away from moisture
- 12 months from the date of manufacturing

YANNI PLAST

Tile - On Floor Adhesive - TA 202

Yanni Plast Tile On Tile Adhesive TA 201 is a grey cement based tile adhesive used for fixing medium sized tiles for internal walls & floors and external floor application

- Ready to use, only water needs to be added
- Faster to apply, good spreadable properties
- Excellent high strength
- Water retention properties
- Suitable for fixing ceramic, mosaic & vitrified medium size tiles on walls & floors



ADVANTAGES

- Comes with Anti-slip properties
- Excellent workability & Smooth finish
- Superior bond strength

USAGE & APPLICATIONS



For Internal tiling application
on walls (Medium size)



For Internal tiling application on
floors (Medium size)



For External tiling application
on floors (Medium size)

SURFACE PRERPARATION, MIXING & APPLICATIONS



Clean the surface to remove dust and loose particles



Mix with 4.5 - 5 litres of water to get the desired consistency by using spiral mixer at low speed. Mix well to obtain a lump-free smooth paste.



Apply the stirred mixture using Notched trowel on to the surface

TECHNICAL INFORMATION

- Mixed density: 1.40-1.60 Kg/ltr
- Pot life: 3-4hrs
- Adjustable time: 40-50 minutes
- W/P for wall Application: 22-25
- Shear adhesion strength N/mm²: IS 15477-2019
- Bulk density: 1.40-1.60Kg/ltr
- Open time: 20-30 minutes
- Tensile adhesive strength: IS 15477 - 2019

Standard : Type 2 Adhesive as per IS 15477-2019 | C1T as per EN 12004-1-2017

COVERAGE

A 20Kg bag of Yanni Plast Tile On Tile Adhesive TA 201 gives ~55-60sq. ft coverage of 3mm thickness

PACKAGING, SHELF LIFE & STORAGE

- Available in 20kg bags
- 12 months from the date of manufacturing
- Store in a dry place away from moisture

YANNI PLAST

External Tile Adhesive -TA 303

Yanni Plast External Tile Adhesive 303 is a grey cement based high polymer modified tile adhesive to provide excellent slip resistance & extended open time properties which is suitable for External Wall & Floor large format Vitrified Tiles, Marble, Granite, Stone etc application.

- Ready to use, only water to be added.
- Extended open time allows ease of application in external areas
- Excellent bonding strength & slip resistance provide good grip to large format tiles & stones



ADVANTAGES

- Superior bond strength
- Enhances safety & durability of exterior tiles
- Excellent grip for large format tiles
- Better correction time during tile applications

USAGE & APPLICATIONS



For external wall large & heavy tiling application

SURFACE PRERPARATION, MIXING & APPLICATIONS



Clean the surface to remove dust and loose particles



Mix with 4.8 - 5.4 litres of water to get the desired consistency by using spiral mixer at low speed. Mix well to obtain a lump-free smooth paste.



Apply the stirred mixture using Notched trowel on to the surface

TECHNICAL INFORMATION

- Mixed density: 1.40-1.60 Kg/ltr
- Pot life: 3-4hrs
- Adjustable time: 40-50 minutes
- W/P for wall Application: 22-25
- Shear adhesion strength N/mm²: IS 15477-2019
- Bulk density: 1.40-1.60Kg/ltr
- Open time: 20-30 minutes
- Tensile adhesive strength: IS 15477 - 2019

Standard : Type 2 Adhesive as per IS 15477-2019 | C1T as per EN 12004-1-2017

COVERAGE

A 20Kg bag of Yanni Plast External & Large Store & Tile Adhesive gives ~55-60sq. ft coverage of 3mm thickness

PACKAGING, SHELF LIFE & STORAGE

- Available in 20kg bags
- 12 months from the date of manufacturing
- Store in a dry place away from moisture

YANNI PLAST

Premium Sand

At YANNIPLAST, we have our own quarry & manufacture our own M-Sand. International machinery is used in the systematic manufacturing, processing, grading & finally washing. The product obtain is completely in line with IS 1942, the Indian Standard for wall plastering. This perfection leads to excellent compactness of plasters.

The Particles

Cubical particles are produced from the European three stage crushing plant where more than 700 KW of electrical energy is consumed to size and shape the tough Basalt igneous rock. These particles are as good as natural sand particles & produce excellent compressive strength in mortars.

Washing of M sand

Ordinary M-Sand cannot become premium plaster sand. Washing is a very important process. The water helps in removal of deleterious materials, which are harmful to the mortars. YANNIPLAST ensures effective washing of this product.

At our plant, water is recycled and thus saved. Uncompromised washing is mandatory, so that you get a genuinely premium plaster sand, graded to perfection and without any deleterious materials.



Why not natural sand?



70% of the earth is covered with water. However, this is majorly salt water. Only 3-4% of this water is potable. Fresh Water is the next big issue faced by the environment experts. It is predicted that there will be a shortage of fresh water, considering the fast growth in population. In India, the situation is very similar to the world. It is extremely important that we take care of our rivers & avoid further damages to them by dredging out sand. Sand removal disturbs the balance of the rivers.

M-sand has successfully demonstrated its performance as a perfect replacement of natural sand & therefore YanniPlast will always ensure that we are environment friendly and use good quality of M-sand.

TECHNICAL INFORMATION

SPECIFICATIONS IS SEIVE SIZES	PERCENTAGE PASSING	
	IS 1542	OUR PRODUCT
10 mm	100%	100%
4.75 mm	95-100%	100%
2.36 mm	95-100%	99%
1.18 mm	90-100%	90%
600 Microns	80-100%	80-85%
300 Microns	20-65%	30-50%
150 Microns	0.15%	0.70%

APPLICATION

- Always check ratio of cement & should be added in line with the requirement.
- Use of plasticizer will certainly enhance the quality of the product.
- This sand demands more water over natural sand plaster.
- Our product can be used for interior as well as exterior wall.

YANNI PLAST

Premium Quality VSI Aggregates

When the need of the hour requires project to be completed on time and with the most rigorous adherence to quality standards, engineers for large infrastructure projects such as Manohar International Airport, trust us. Over the last decade, we have been ensuring that only the finest ingredients go in the making of concrete that withstand the severest usage conditions

- Good quarry source
- Perfect gradation
- Consistent quality standards
- Assured quantities



ADVANTAGES

- Cubical Particle Shape
- Internal Gradation - IS 383
- Surface Texture
- Greater Durability
- Zero Impurities (Marine And Reduction In Wastage And Increase In Economic Value Organic)

IMPACT ON CONCRETE

- High Compressive Strength
- Reduction In Voids Increases Workability
- Reduction In Moisture Absorption/ Lower Water Cement Ratio
- Greater Durability
- Longevity Of Structure/ Higher Resistance To An Aggressive Environment



Certificate of Registration

YANNI INFRA PROJECTS PRIVATE LIMITED

SR NO 27/24, INSULI SAWANTWADII, SINDHUDURG,
MAHARASHTRA – 416511, (INDIA)

has been assessed and Certified by Otabu Certification Pvt. Ltd.
as meeting the requirements of:

ISO 9001:2015 Quality Management System

For the following scope of activities:

MANUFACTURING OF GRADED COARSE AGGREGATES(40,32.5,30,20,12.5,6MM) AND FINE AGGREGATES
(ZONE I,II,III,IV, PLASTER SAND AND CONCRETE SAND) ALONG WITH DRY MORTAR (READY MIX PLASTER,
TILE ADHESIVE, BLOCK/BRICK JOINTING MORTAR, DRY READY MIX CONCRETE, GROUT, MICRO CONCRETE)
REQUIRED FOR CONSTRUCTION OF BUILDING AND OTHER INFRASTRUCTURE WORKS FROM VERTICAL
SHAFT IMPACTOR CRUSHERS AND STATE OF ART DRY MORTAR PLANT

Issue No : 01
Date of Initial Certification: 29 April 2022
Date of this Certificate: 19 April 2023

Revision No () : NA
Surveillance audit on or before: 28 April 2024
Certificate Expiry: 28 April 2025
(subject to the company maintaining its system to the
required standard)

Certificate No:- 0429Q127022
To Verify this Certificate please visit at www.otabucert.com



Dr. Anita Gupta
(Managing Director)

*Validity of the certificate is subject to successful completion of surveillance audit on or before due date (in case surveillance audit is not allowed to be conducted, this certificate shall be suspended/withdrawal). *This Certificate of Registration remains the Property of Otabu Certification Pvt. Ltd. and shall be returned immediately upon request.

Otabu Certification Pvt. Ltd., RZ-9 (Ground Floor), Prem Nagar, Uttam Nagar, New Delhi-110059 (India)

Email:- info@otabucert.com website:-www.otabucert.com

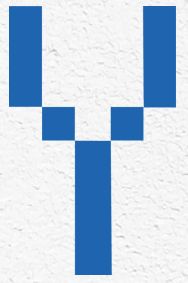
Weight Chart of Steel Bars

Sr No	Dia of Steel Bar	Weight Per Meter	
		Round Bar	Square Bar
1	6mm	0.22kg	0.28kg
2	8mm	0.39kg	0.50kg
3	10mm	0.62kg	0.78kg
4	12mm	.89kg	1.31kg
5	16mm	1.58kg	2.01kg
6	20mm	2.46kg	3.14kg
7	25mm	3.85kg	4.91kg
8	28mm	4.83kg	6.15kg
9	32mm	6.31kg	8.04kg
10	36mm	7.99kg	10.17kg
11	40mm	9.86kg	12.56kg
12	45mm	12.49kg	15.90kg
13	50mm	15.41kg	19.62kg

Approximate Density of Construction Materials

Material	Kg /m ³
Concrete	2400
Ashphalt Concrete	2400
Bricks	1900
Cement	1400
Clay(Wet)	2080
Cement Mortar	1440
Reinforced Concrete	2500
Gypsum	1200
Sand	1650
M-Sand Washed	1730
M-Sand Unwashed	1650
Concrete Blocks	1400
Gravels	1800
Steel	7850
Wood(Average)	400-700
Water	1000
Lead	11370
Cork	240

NOTES



Committed to Building a sustainable future.



Committed to Building a sustainable future.

